

## 1) Getting Started

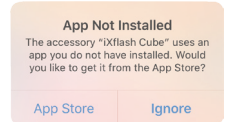
Plug the “male” USB connection\* of the iXflash Cube into the corresponding “female” USB connection\* of the wall plug charger used to charge your “iDevice” (iPhone, iPad, or iPod). Connect the iPhone/iPad charging cable with the USB side into the corresponding USB port on the iXflash Cube. Plug the other end of the charging cable, either Lightning or or USB Type C, into your iPhone/iPad.

\*The USB connection for the iXflash Cube is available as either USB Type A or USB Type C. Depending on the version you are using, when referencing USB, it will apply to both USB Type A or Type C.



## 2) Download APP

If it's the first time connecting your iPhone/iPad to the iXflash Cube (after following step #1), a prompt on your iPhone/iPad will lead you to the App Store to download the FREE iXflash Cube App. Another option is to search, “iXflash Cube”, on the Apple App Store or use the following QR code to download the App.

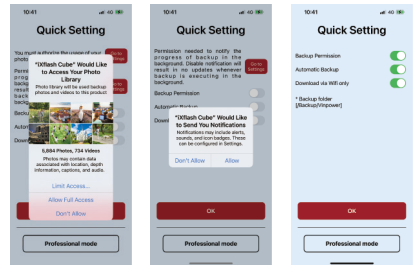


## 3) Setting up the App for the first time

Please click on iXflash Cube App icon on your iPhone/iPad to launch the app.



There will be popup prompts to ask permissions for accessing photo albums and notifications, please authorize all requested access during the setup. Changes can be made to limit accessibility after installation, if so desired. See these images to represent the iXflash Cube App setup process.

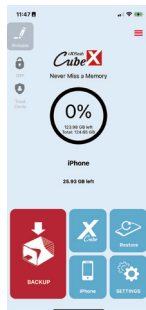


## 4) Perform Automatic Backup

Once the iXflash Cube App is installed on to your iPhone/iPad, it will connect your iPhone/iPad to the iXflash Cube to initiate the backup process automatically, no further action is needed by the user. In addition, the iPhone and iPad's battery will be charged at the same time.

## 5) Main Page

-  **Backup icon :** Back up all videos and photos stored on iPhone/iPad
-  **iXflash Cube logo icon :** View all content stored on the iXflash Cube
-  **Restore icon:** Restore all videos and photos stored on the iXflash Cube onto your iPhone/iPad
-  **iPhone icon:** View all content stored on the iXflash Cube APP, stored on your iPhone/iPad
-  **Settings:** Adjust settings for iXflash Cube



## 6) View and Manage all Backed Up Files on the iXflash Cube through a Computer:

A ) Connect the male side of iXflash Cube into any corresponding female USB connection on any computer with a USB connection (if the computer doesn't have the same style of USB connection as the iXflash Cube, you can use an adapter for the proper connection).

B ) Open the drive on your computer associated with the iXflash Cube

C ) Access any files stored on the iXflash Cube the same way you would a standard USB connection. You can copy, edit, modify, delete, and/or add new files to the iXflash Cube from your computer, so that you can access\* them from an iPhone/iPad or another computer.

\*Only files supported by an iPhone/iPad natively or through the iXflash Cube App as well as from the OS installed on any other computer can be accessed from the iXflash Cube.